



Case Study

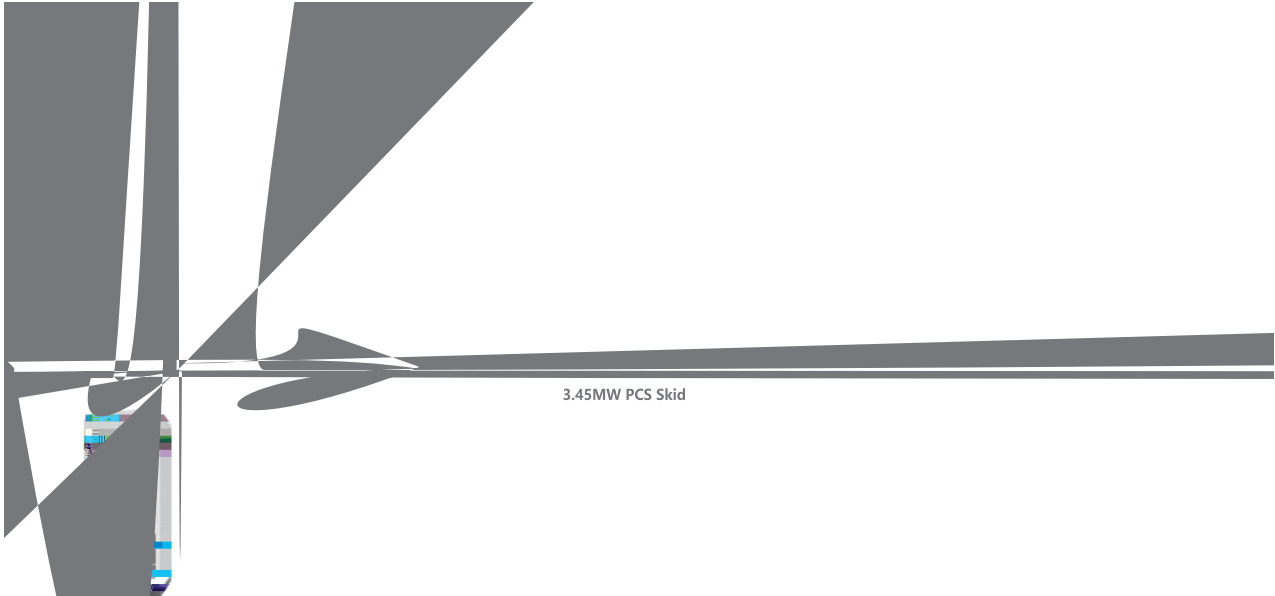
3.45MW-6.88MWh

5MWp

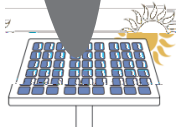
BESS 5MWp

3.45MW-6.88MWh

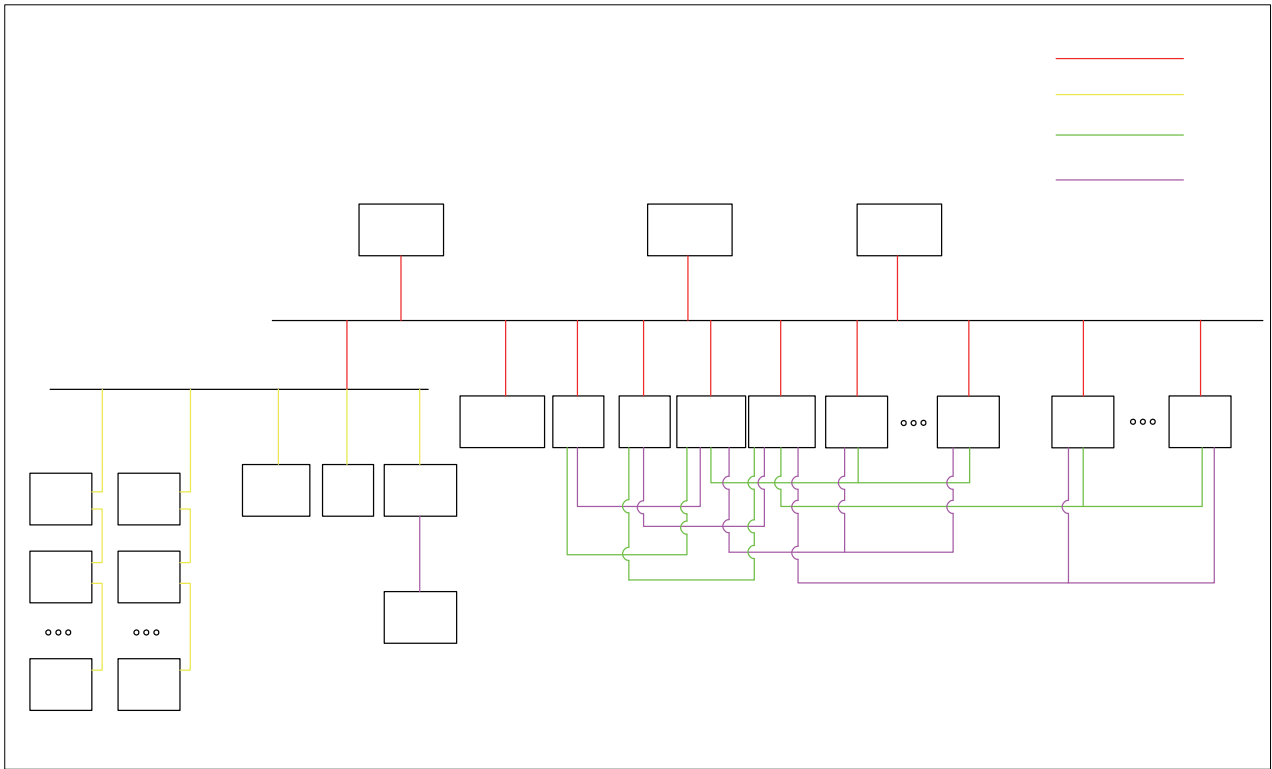
2 SunTera 3.44MWh



3.45MW PCS Skid



2.5MW PV Array



2



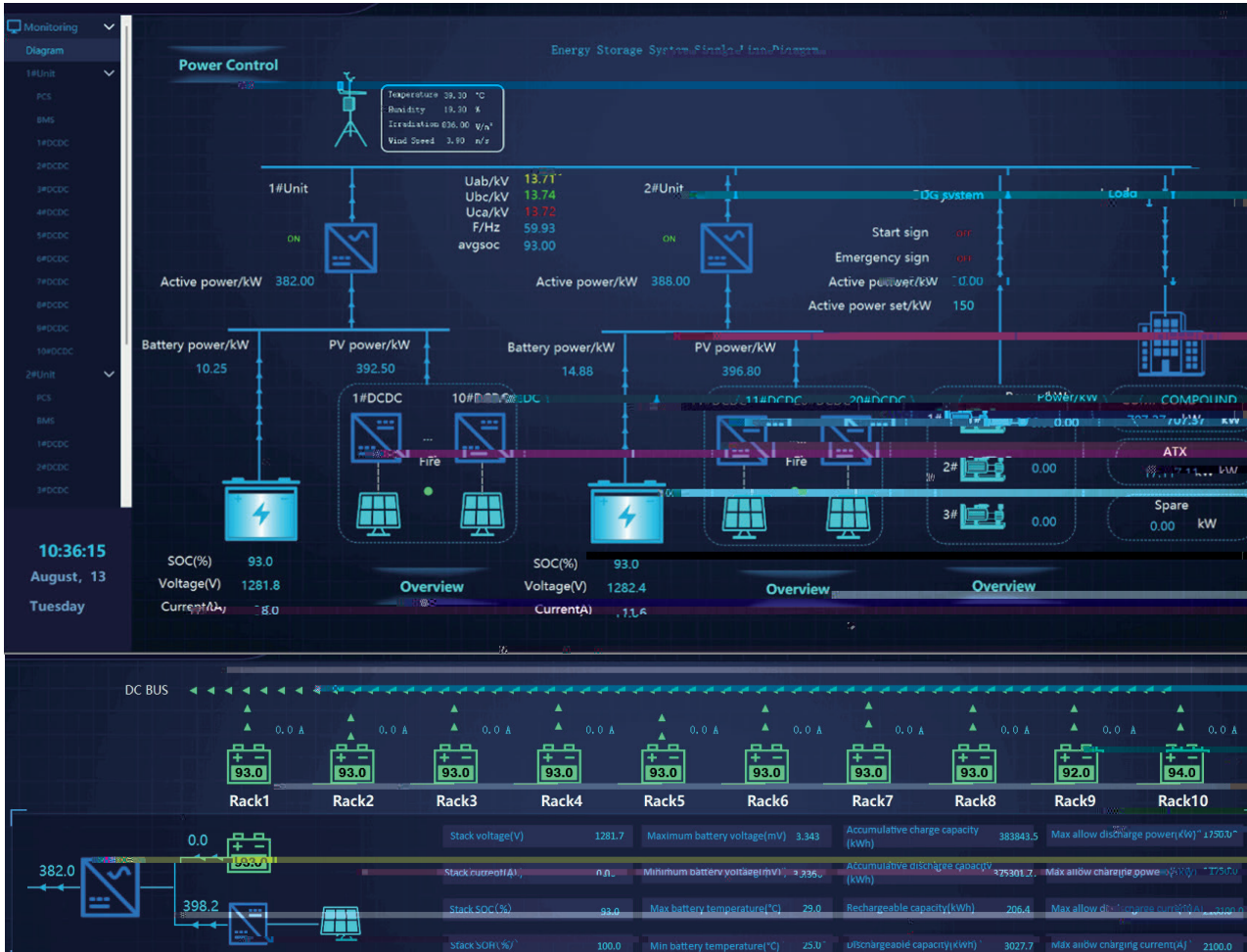


SOC 93%

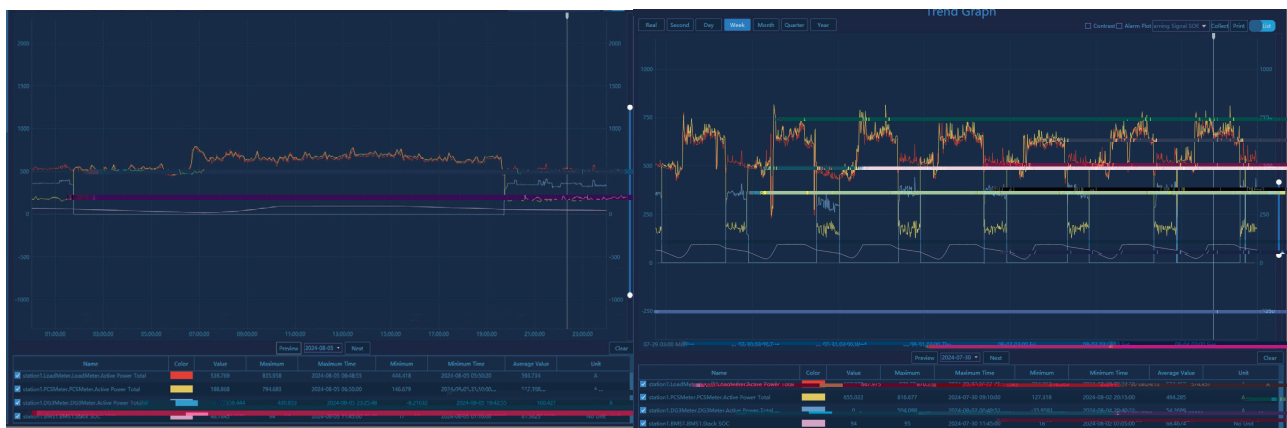
707.37kW

PCS 3

789.3kW



5,6. EMS



7,8. EMS

MW

26

SunTera
1500V DC-DC

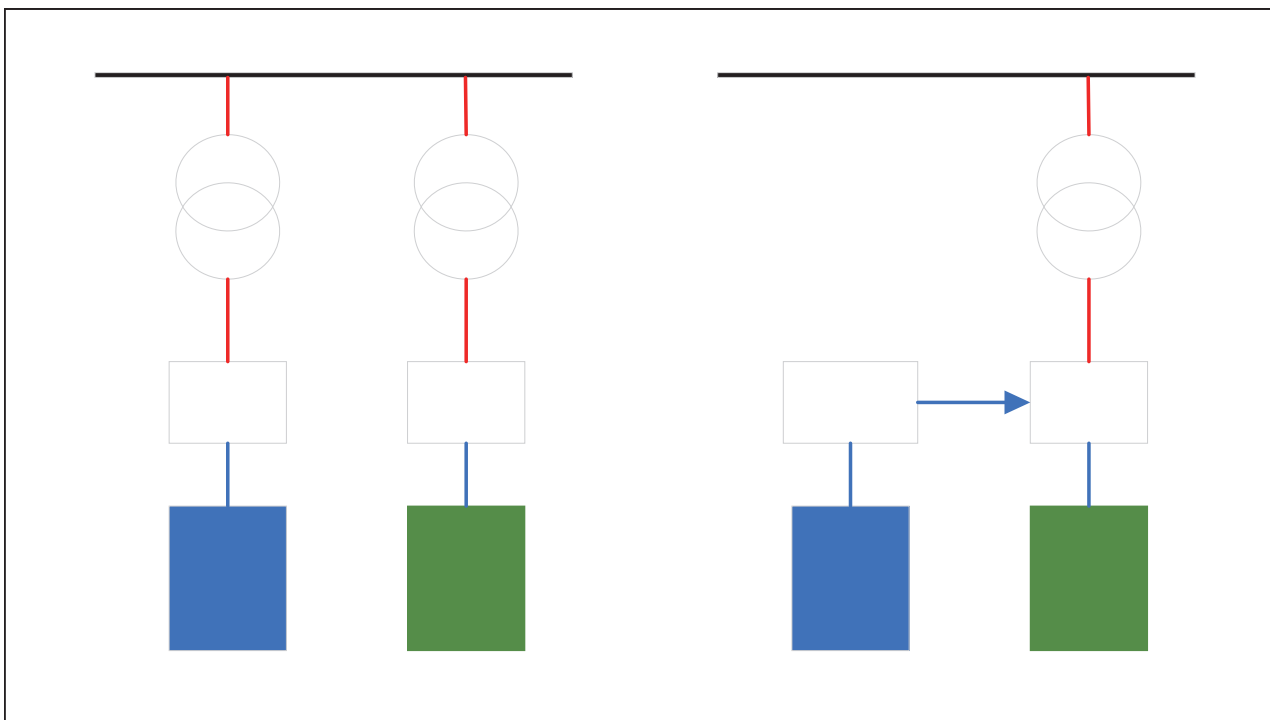
PCS VSG
2 1725kVA PCS
SOC

SunTera

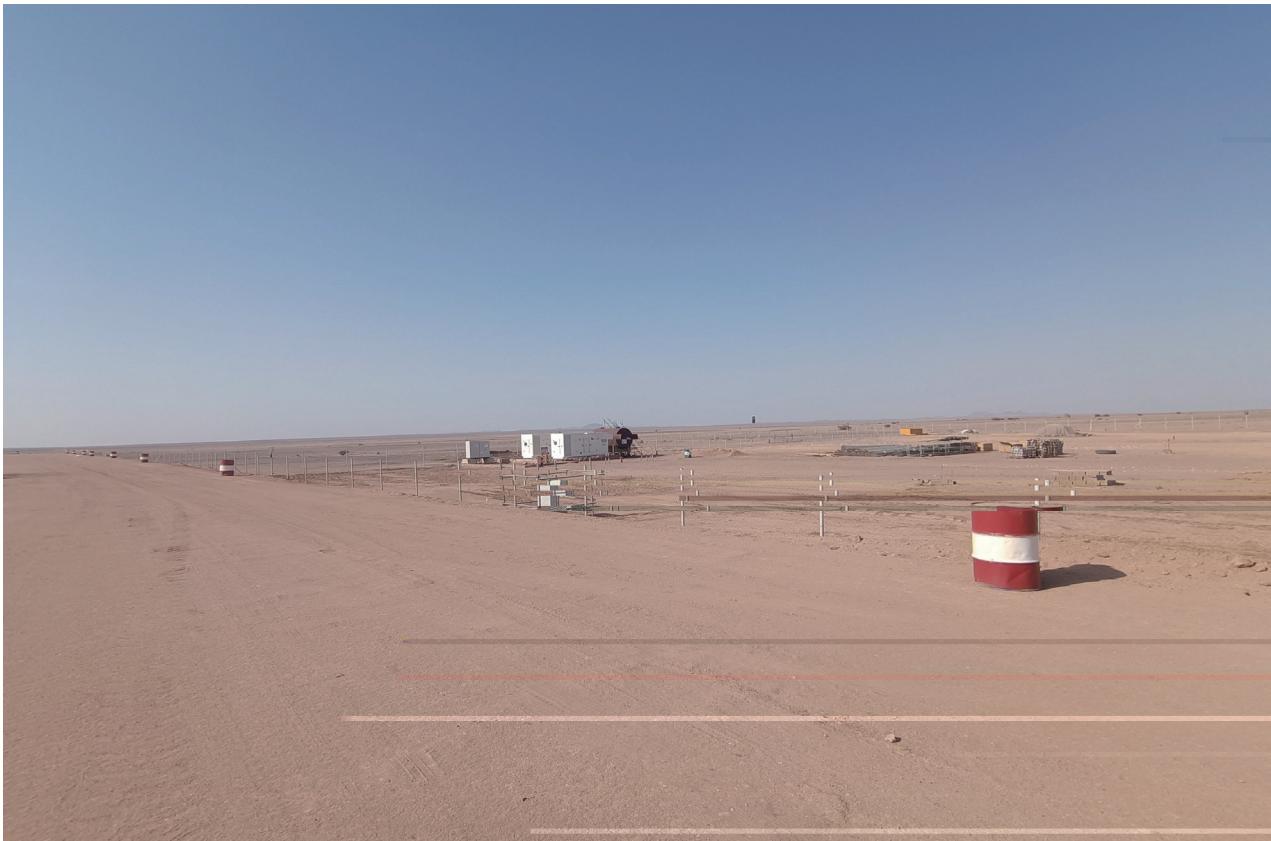
50

35

5



9. 9. VS



10.

*



www.jinkosolar.com

1466 1
+86 400 860 8878

Case Study

3.45MW-6.88MWh

5MWp