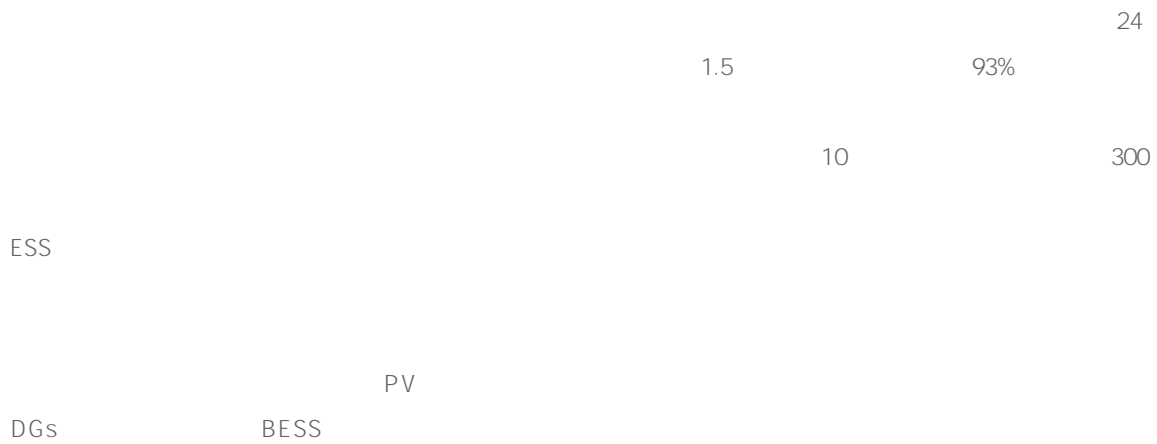
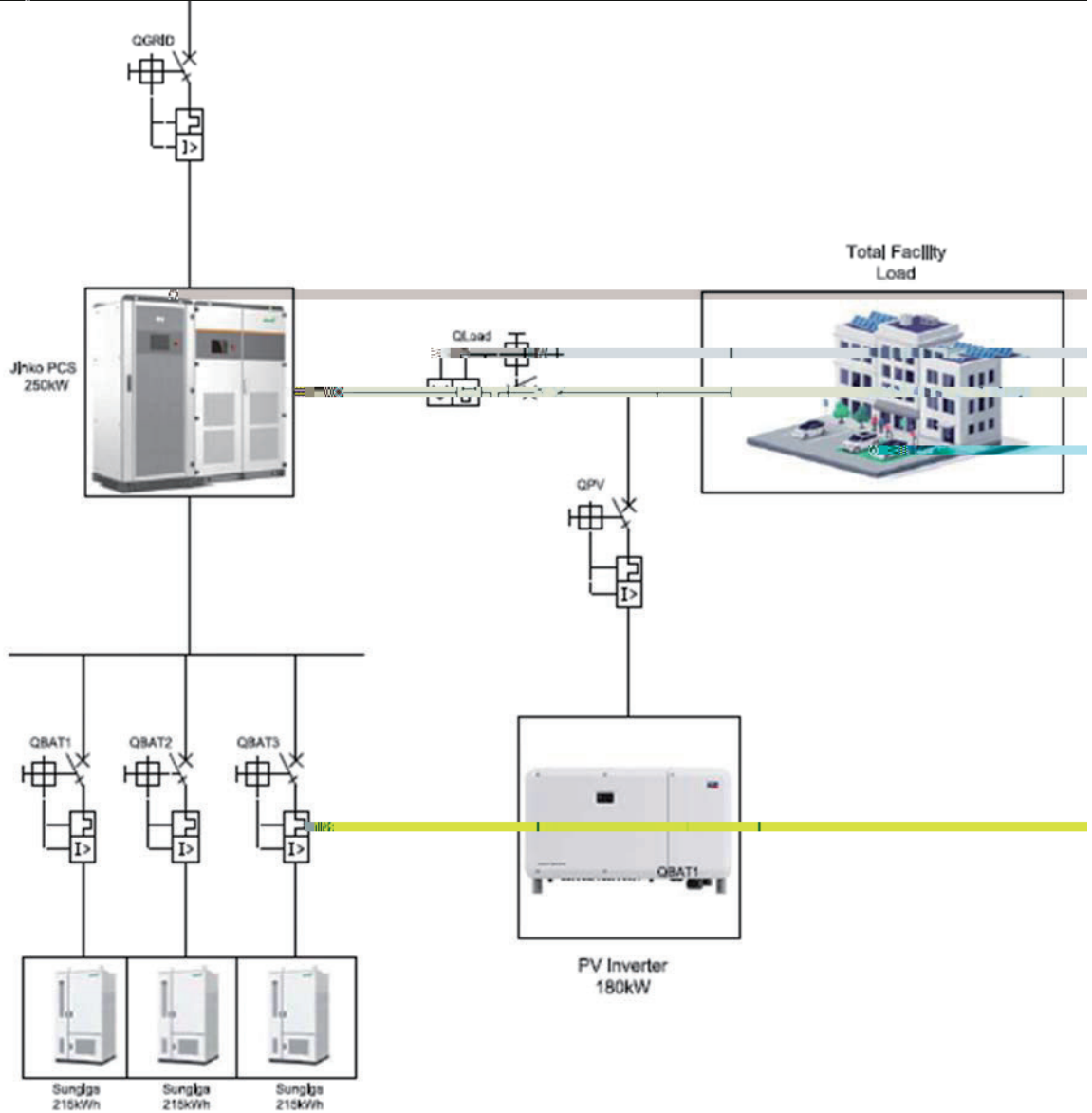
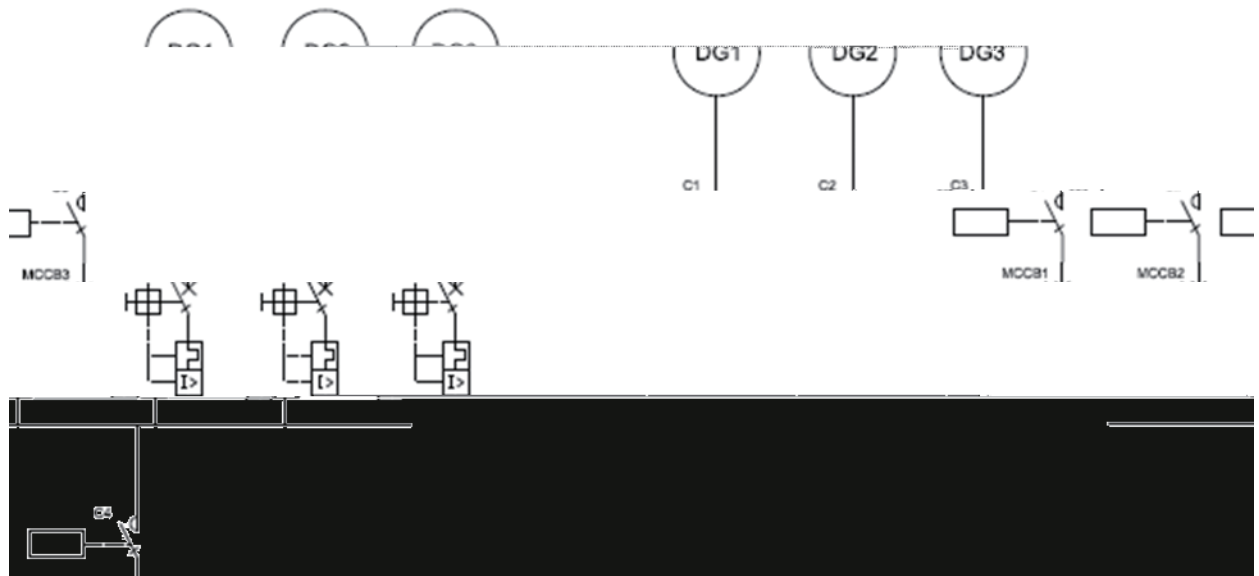




中东250kW/645kWh 锂电池储能项目

Case Study





645kWh Jinko SunGiga

645kWh

Battery Rack

BMS
EMS

PCS

215kWh 5 153.6V
768V

HVB
BCU

BMU BMS CAN
BCU

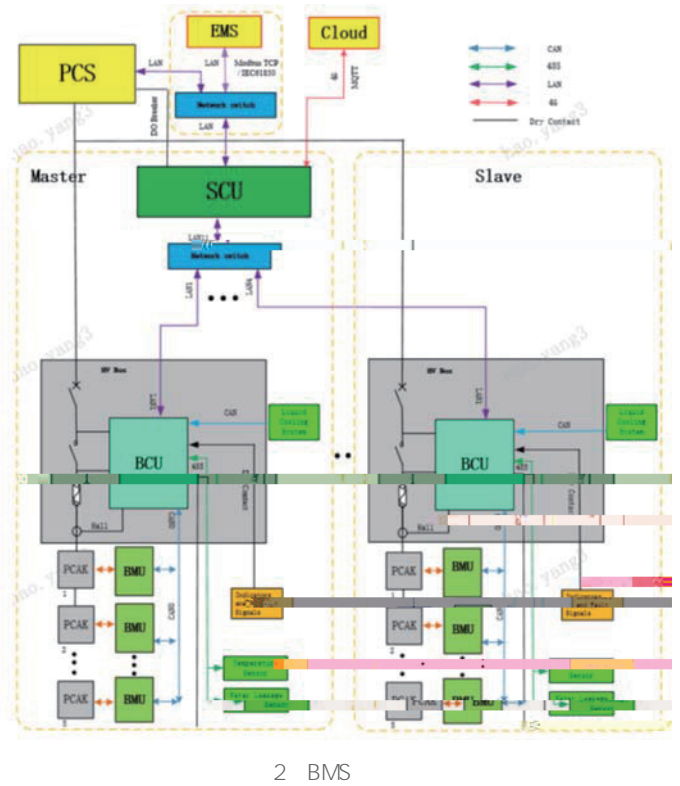
BMU

BCU HVB BMU

BMS

SOC SOH

BMS



2 BMS

PCS

250kW

PCS

DG

PV Inverters

Grid Following

Grid Forming

PCS

DC-AC

PQ

DC-AC

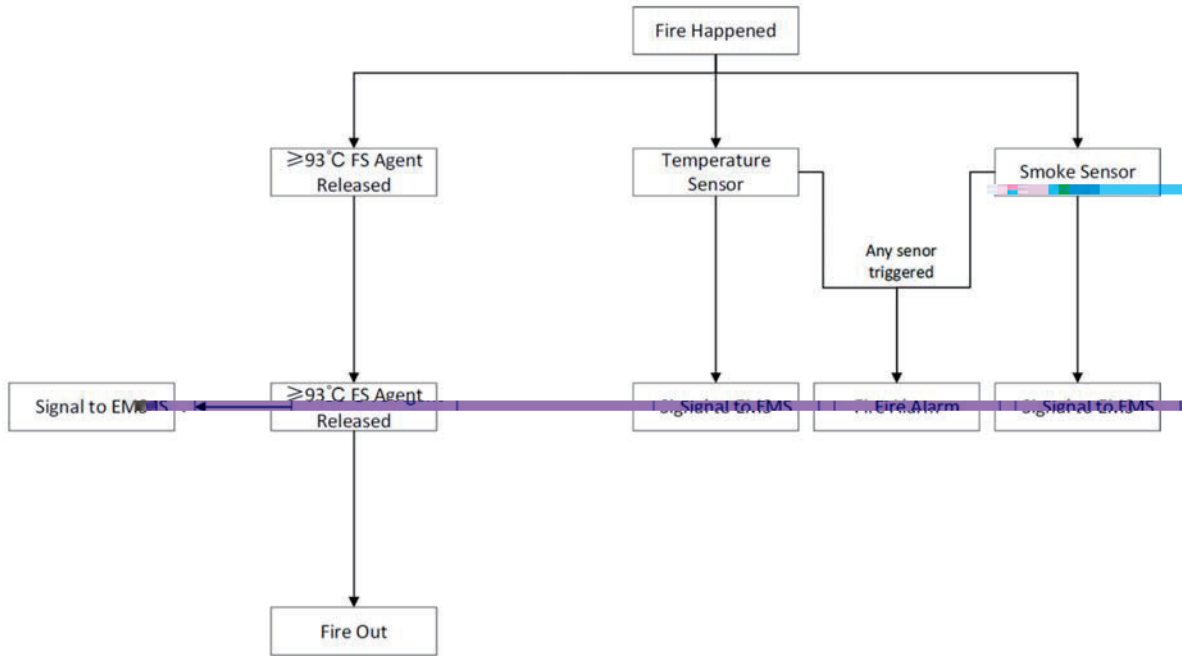
4kW

VF

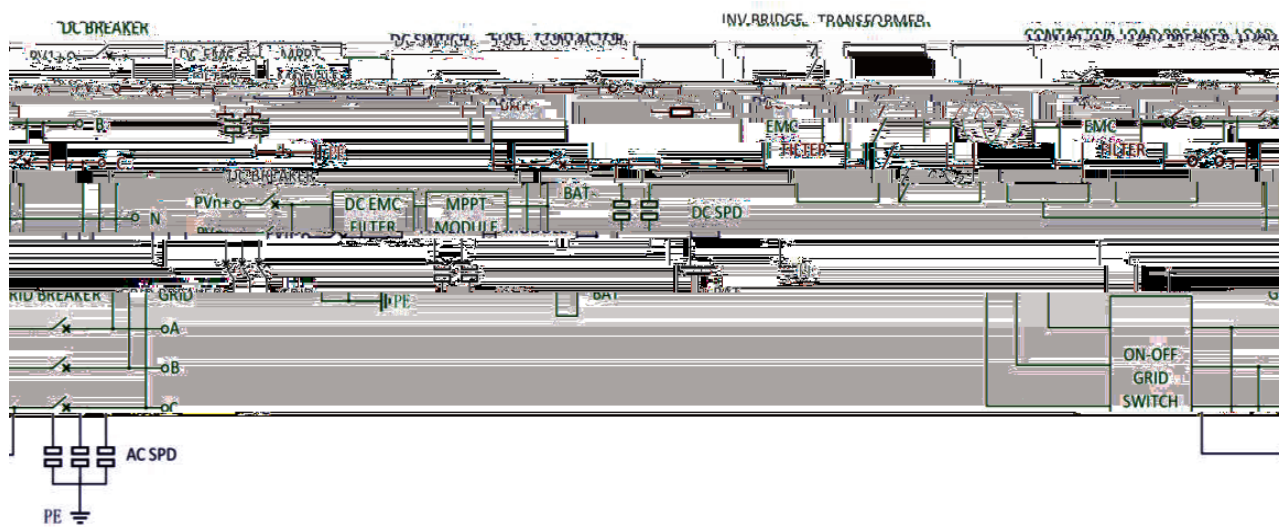
DC-AC

ESS

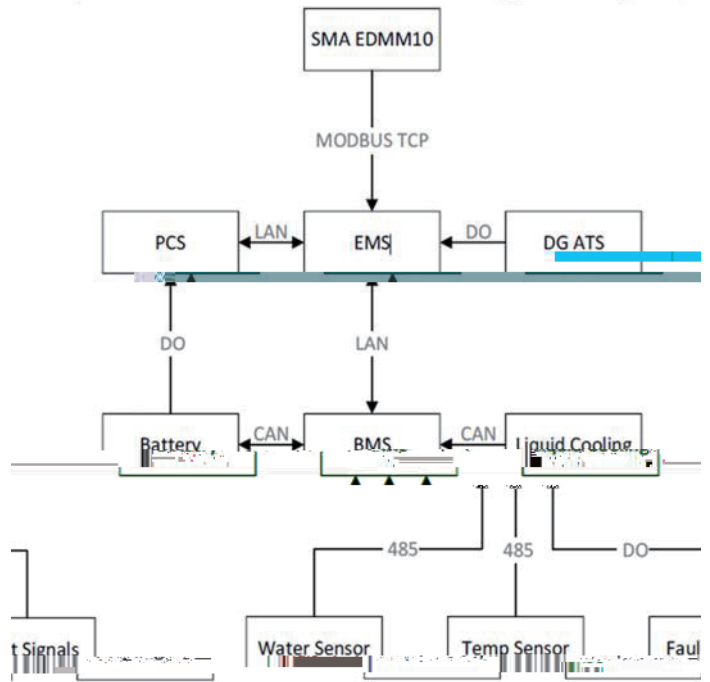
ESS



3



4 PCS



5 EMS

$$P_{Setpoint} = P_{Charging} + P_{Load}$$

$$P_{Setpoint} = 0.3 \times P_{CS} Capacity + P_{Load}$$

P

$DG_{capacity} = 2$

$P_{charging\ from\ DG}$

SCU

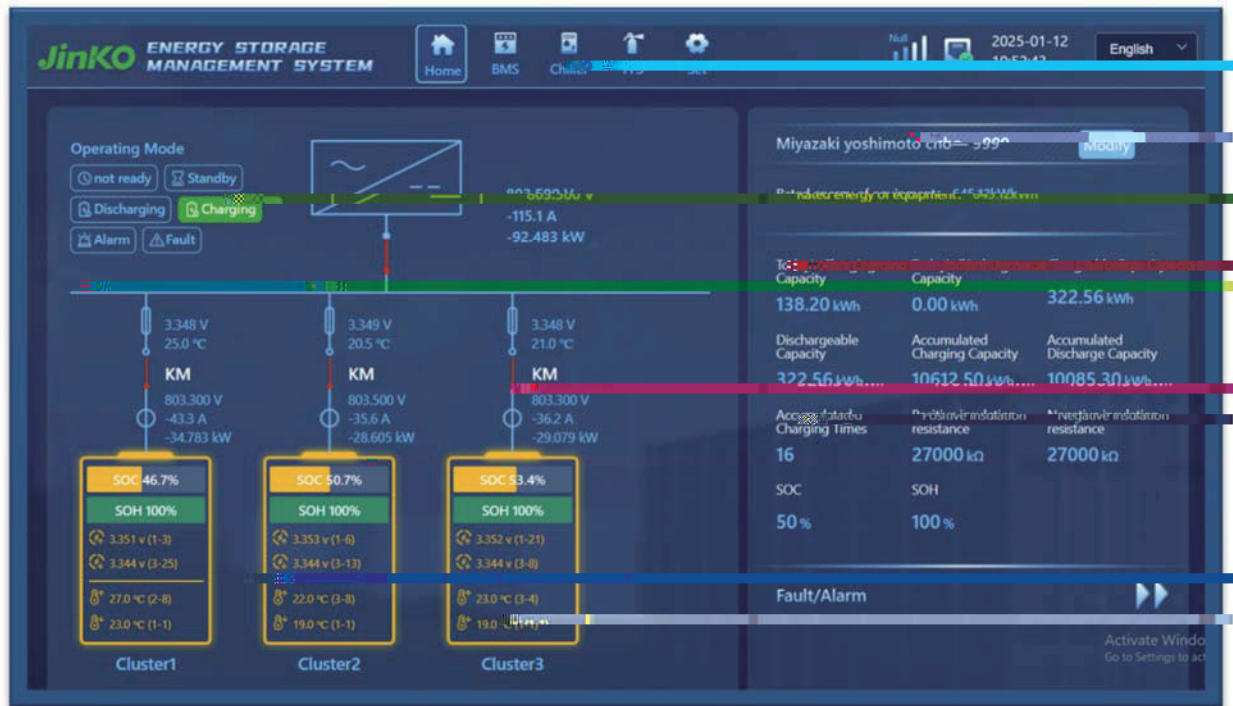
SCU

3

FSS

BMUs

BCUs

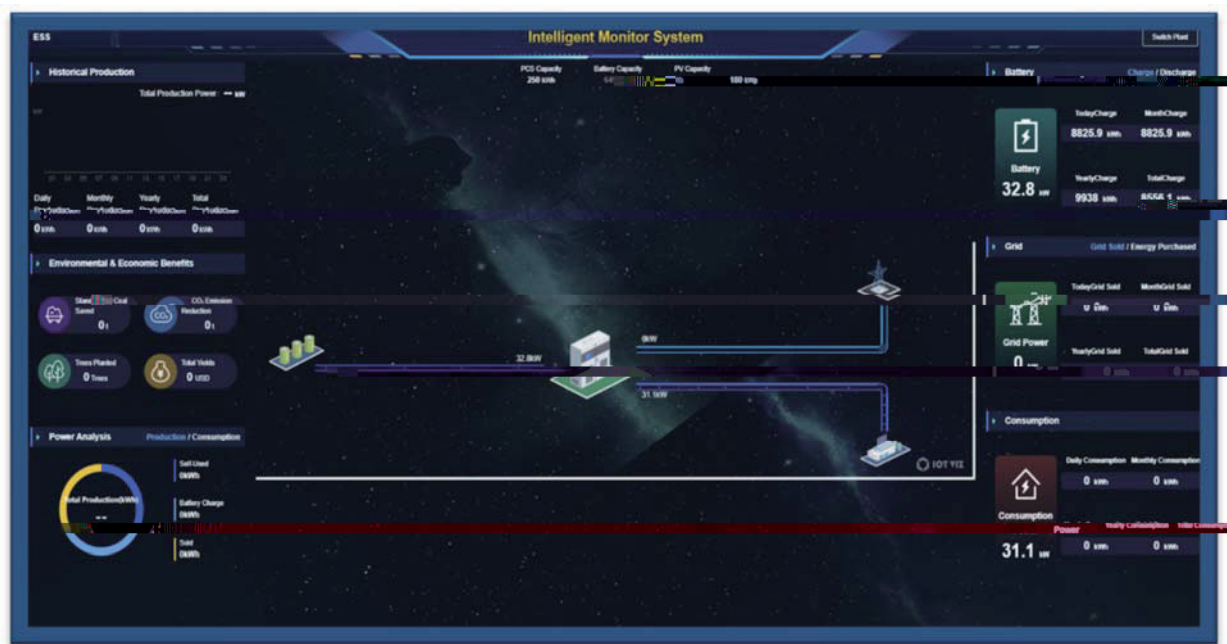


6 SCU



7

IoT



8 EMS

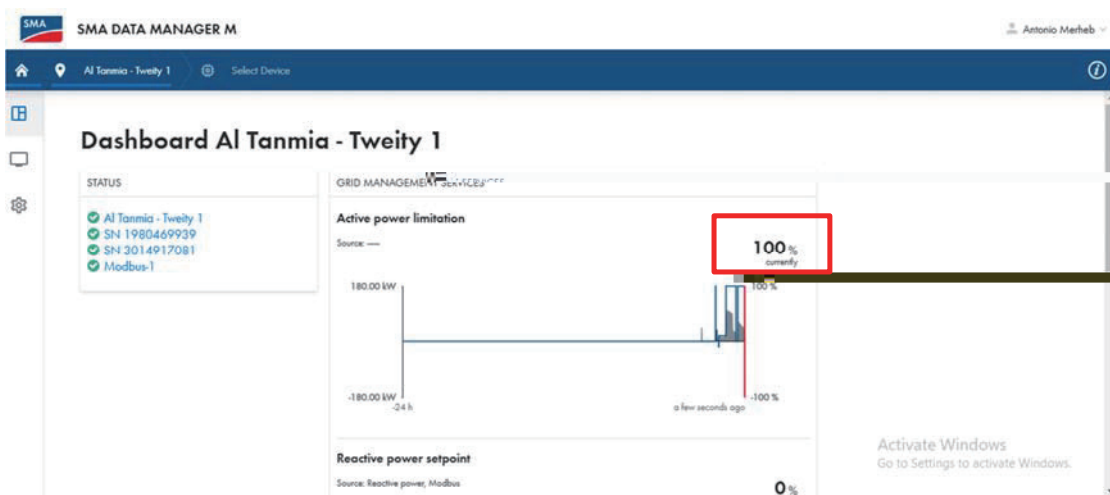
20% SOC 90

SOC

90%

100%

9



9 SMA

EMS

100%

90% SOC 95

$$\text{Calculated PV } P_{\text{Setpoint}} = 75kW + 35kW = 110kW$$

~~Calculated PV P~~

